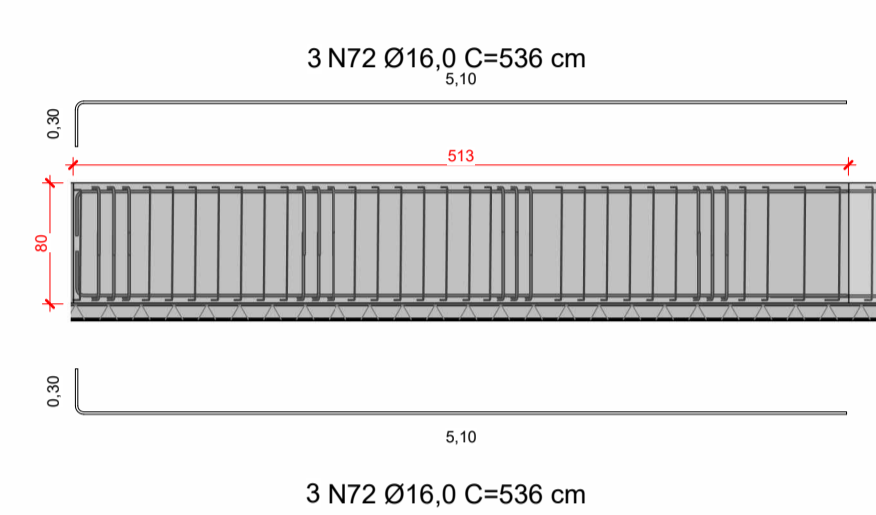
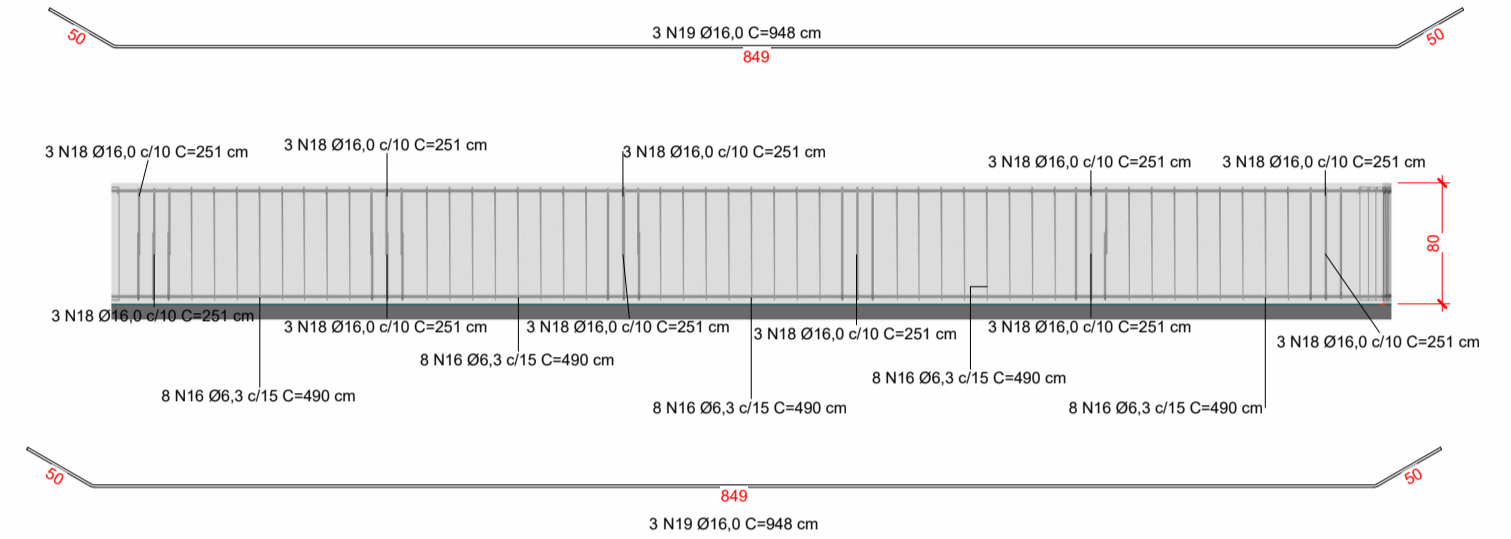


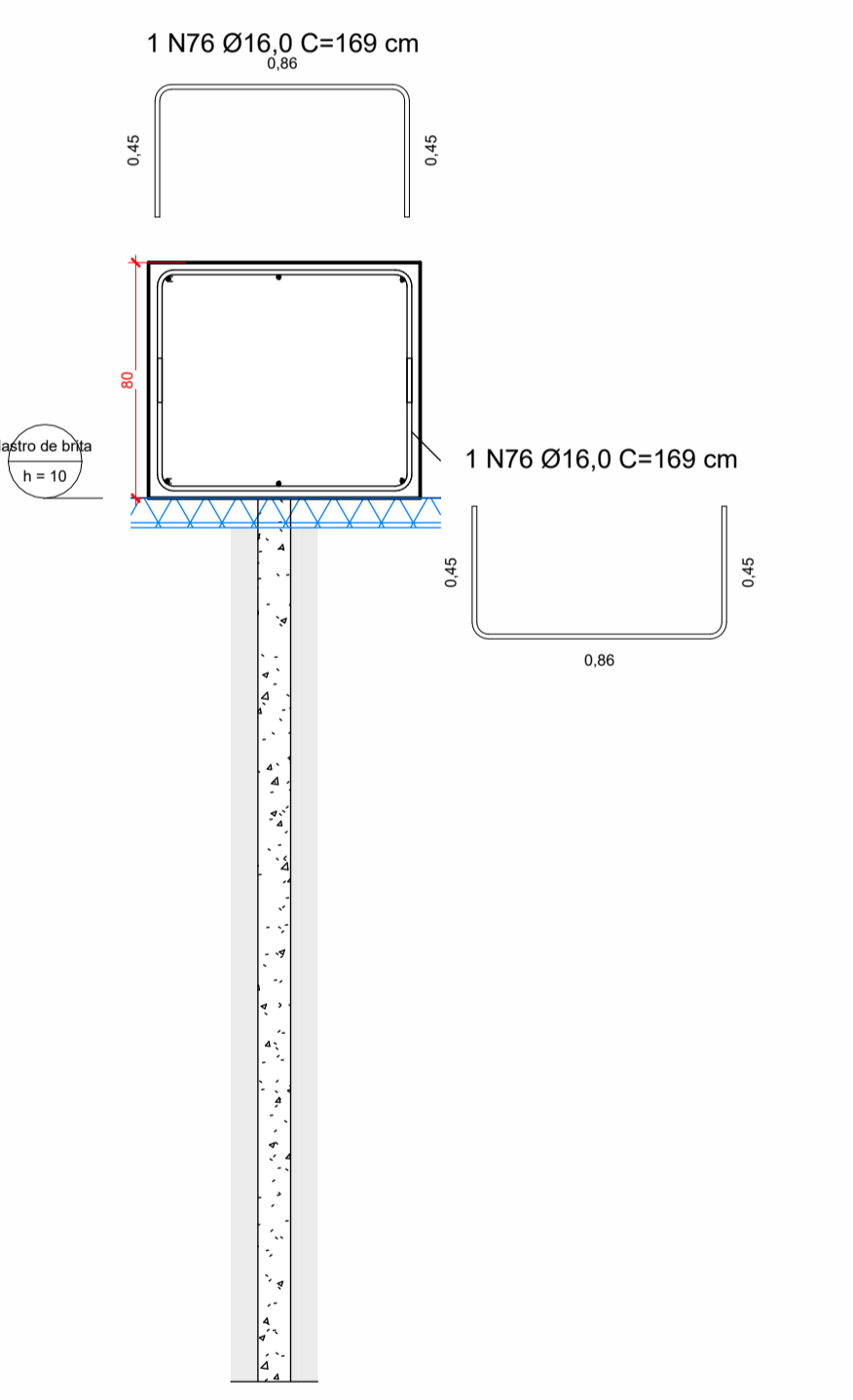
1 Vista Sapata Corrida  
1 : 50



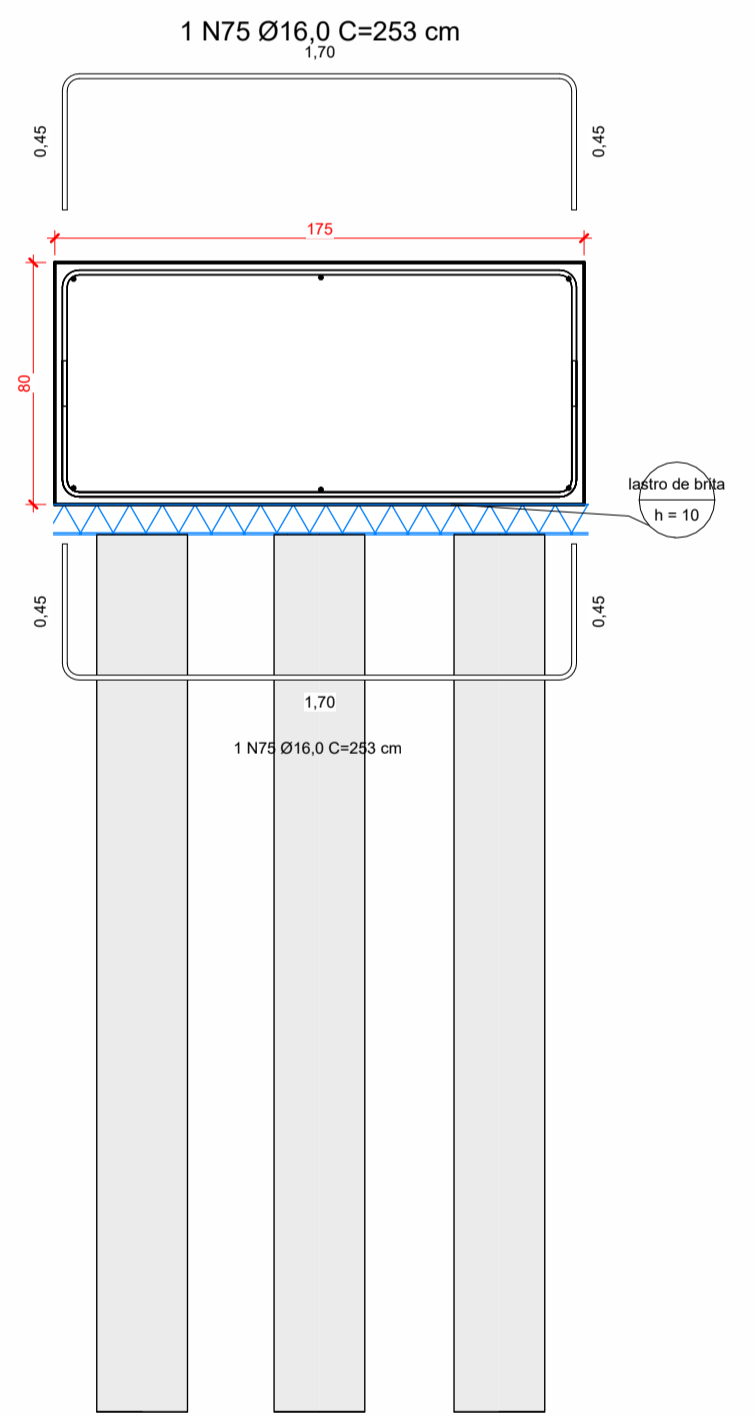
5 Elevação - Vista frontal Alas  
1 : 50



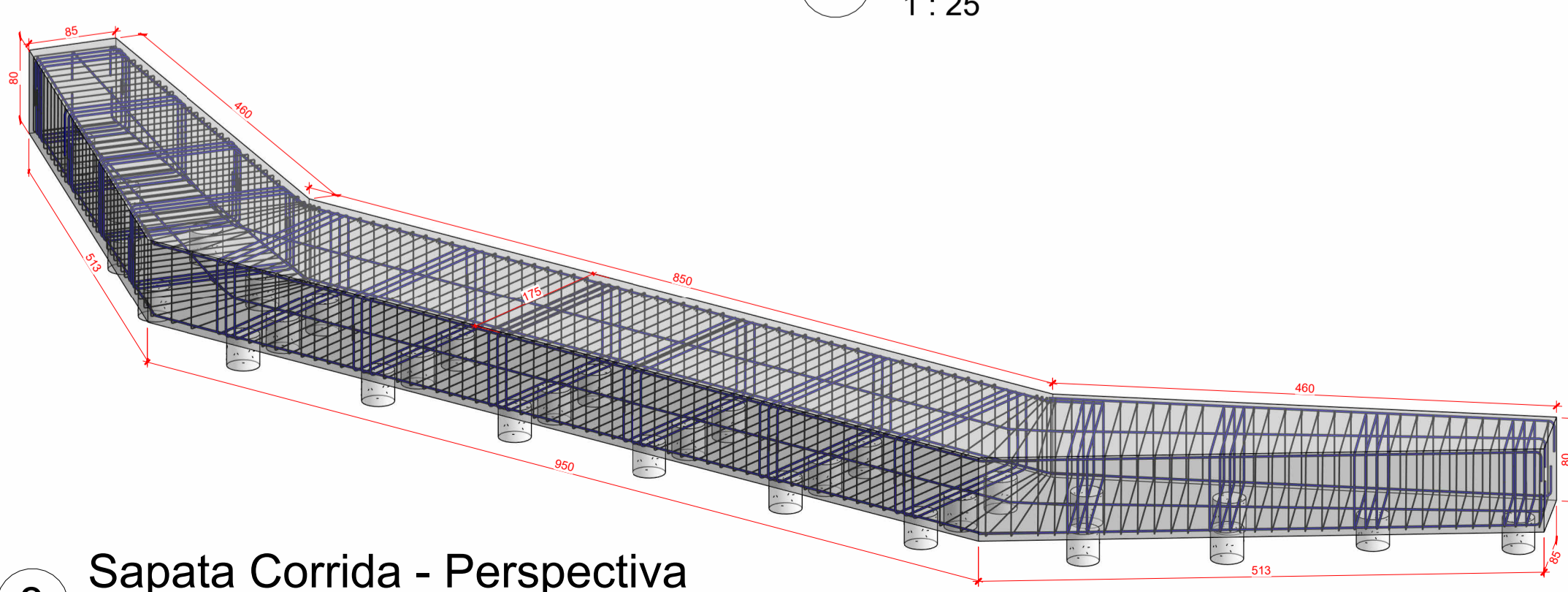
4 Elevação Frontal (Centro)  
1 : 50



7 Corte Sapata B-B (Sob Pilar 1)  
1 : 25



2 Corte Sapata A-A (Sob Pilar 04)  
1 : 25



8 Sapata Corrida - Perspectiva

Resumo de aço - Geral					
unun	N. do vergalhão	Comprimento unitário (cm)	Quantidade e Total	Peso Kg	Formato
16,0 mm	19	948	4	59,848935	849
16,0 mm	20	489	4	30,845202	462
16,0 mm	21	535	2	16,877807	509
16,0 mm	36	168	12	31,873294	86
16,0 mm	39	168	4	10,590592	86
16,0 mm	40	191	2	6,041682	86
16,0 mm	41	194	4	12,225059	109
16,0 mm	42	193	8	24,401781	111
16,0 mm	43	192	2	6,071908	111
16,0 mm	44	192	4	12,102797	110
16,0 mm	45	190	4	12,017589	109
16,0 mm	46	215	4	13,598464	108
16,0 mm	47	216	4	13,646037	133
16,0 mm	48	217	4	13,706074	134
16,0 mm	49	216	4	13,636847	133
16,0 mm	50	215	4	13,594078	133
16,0 mm	51	214	4	13,49143	131
16,0 mm	52	235	4	14,808361	152
16,0 mm	53	238	4	15,022655	155
16,0 mm	54	240	4	15,15134	157
16,0 mm	55	240	4	15,129837	157
16,0 mm	56	238	4	15,043013	156
16,0 mm	57	237	4	14,963054	154
16,0 mm	61	1045	4	65,938495	50
16,0 mm	64	1003	4	63,280434	885
16,0 mm	67	484	4	30,551073	458
16,0 mm	72	536	4	33,85377	510
16,0 mm	74	537	2	16,956282	511
16,0 mm	75	253	42	167,46596	170
16,0 mm	76	169	4	10,671669	86
16,0 mm	79	485	4	30,625298	459
16,0 mm	80	483	4	30,504044	459

Resumo de aço - Geral					
unun	N. do vergalhão	Comprimento unitário (cm)	Quantidade e Total	Peso Kg	Formato
6,3 mm	8	481	4	4,712079	162
6,3 mm	9	475	4	4,658587	162
6,3 mm	12	459	4	4,499332	159
6,3 mm	13	454	4	4,446145	151
6,3 mm	14	448	4	4,392392	149
6,3 mm	15	443	4	4,339772	146
6,3 mm	16	490	80	96,055504	143
6,3 mm	17	432	4	4,233399	143
6,3 mm	23	399	4	3,913684	143
6,3 mm	24	394	4	3,860753	143
6,3 mm	25	389	4	3,807642	143
6,3 mm	26	383	4	3,754719	143
6,3 mm	29	367	4	3,595173	143
6,3 mm	30	361	4	3,541973	143
6,3 mm	31	356	4	3,488786	143
6,3 mm	32	351	4	3,435599	143
6,3 mm	33	345	4	3,381487	143
6,3 mm	34	340	4	3,329226	143
6,3 mm	35	334	4	3,27604	143
6,3 mm	38	317	2	1,554267	143
6,3 mm	58	489	2	2,393802	166
6,3 mm	65	506	4	4,9562	166
6,3 mm	66	499	4	4,893116	166
6,3 mm	68	495	4	4,846156	166
6,3 mm	69	437	4	4,285421	166
6,3 mm	70	488	2	2,392785	166
6,3 mm	71	405	4	3,967466	166
6,3 mm	73	410	4	4,020652	166
6,3 mm	77	314	2	1,536865	166
6,3 mm	78	416	4	4,073839	166
16,0 mm	3	166	4	10,50203	166
16,0 mm	18	251	38	150,76127	166

**Resumo de concreto - Sapata - 2 und**

Nível	Volume de Concreto 25 MPa
Concreto C-25	45,05

**Aço - Sapata Corrida - 2 UND**

Diâmetro (Ø)	Qty barras	Peso (kg)
6,3 mm	70	205,64
16,0 mm	53	1.005,80
	123	1.211,44

APROVAÇÃO

**APROVADO**  
DEPARTAMENTO DE ENGENHARIA DE RIO BONITO DO IGUAÇU

Município: RIO BONITO DO IGUAÇU/PR	obra: PONTE SOBRE O RIO CHARQUEADA ESTRADA DA INTEGRAÇÃO VÃO 15,50 M, H:5,00 M	Prancha: <b>05/05</b>
ESCALA: INDICADA	Proprietário: PRF. MUN. DE RIO BONITO DO IGUAÇU - PR PROPRIETÁRIO	Data: 12/08/2025
Arquivo Plotagem: PONTE RIO CHARQUEADA	Conteúdo Da Prancha: VISTAS, CORTES E TABELAS DA SAPATA CORRIDA	desenho:
Responsável Pelo Projeto: ENIO AUGUSTO S. DA LUZ ENGº CIVIL - CREA/PR - 219227-D		