



PROJETO  
001  
ESTRUTURAL  
BARRACÃO PRÉ-MOLDADO

ENDEREÇO  
RUA EDUARDO DRABECKI

ÁREA DO TERRENO  
465,72 m<sup>2</sup>

ÁREA TOTAL DA CONSTRUÇÃO  
463,43 m<sup>2</sup>

PROPRIETÁRIO(S)

PREFEITURA MUNICIPAL DE RIO BONITO DO IGUAÇU  
CNPJ: 95.587.770/0001-99

RESPONSÁVEL TÉCNICO

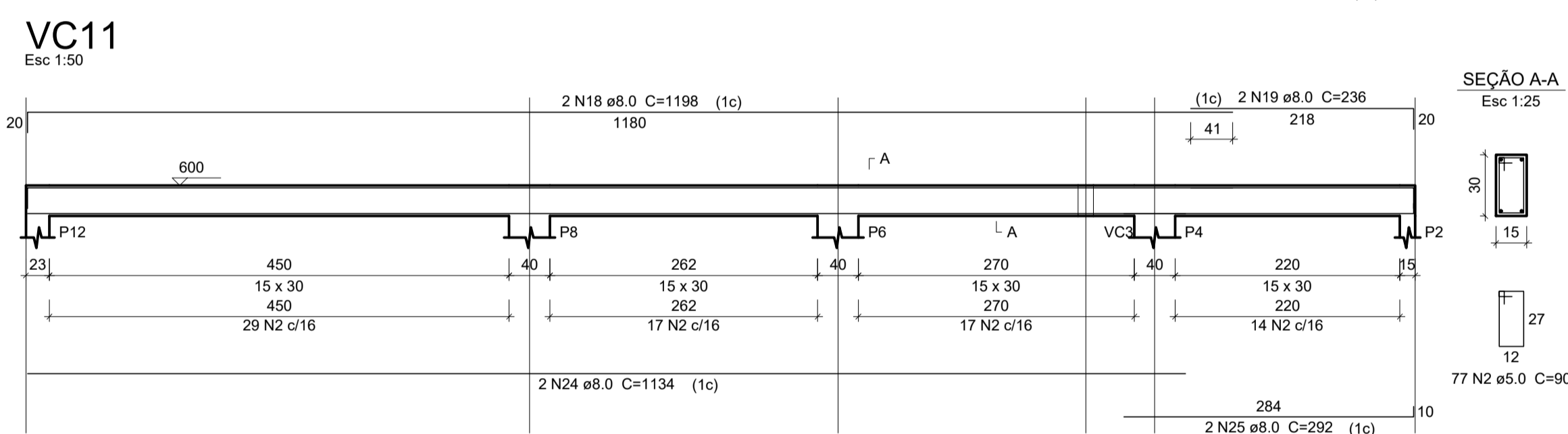
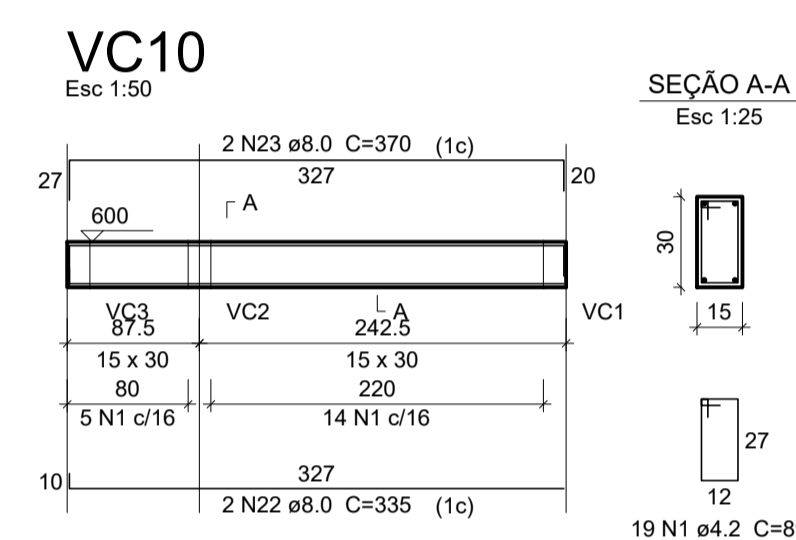
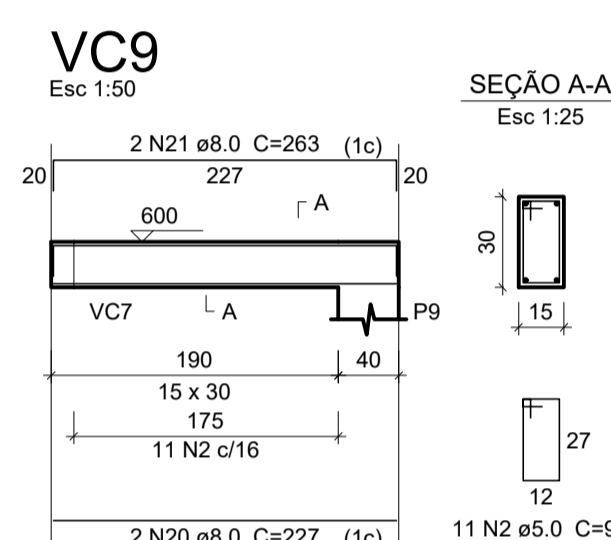
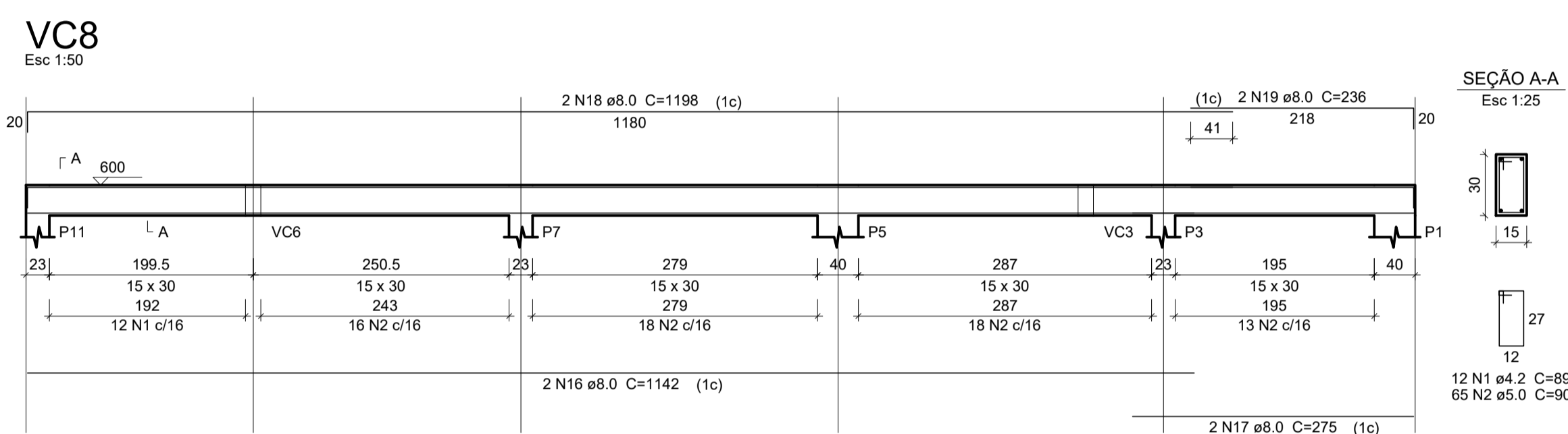
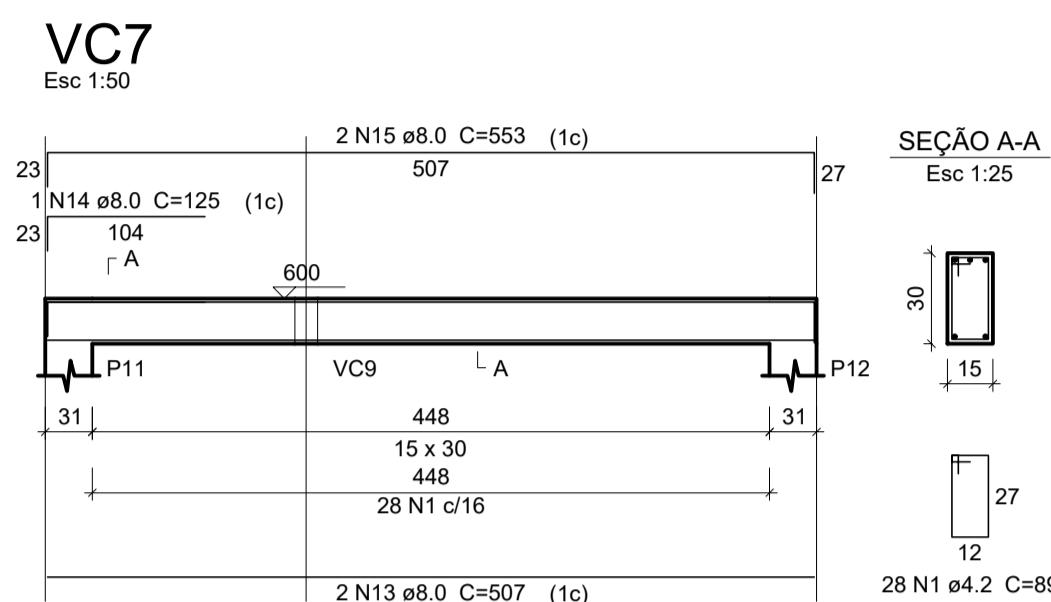
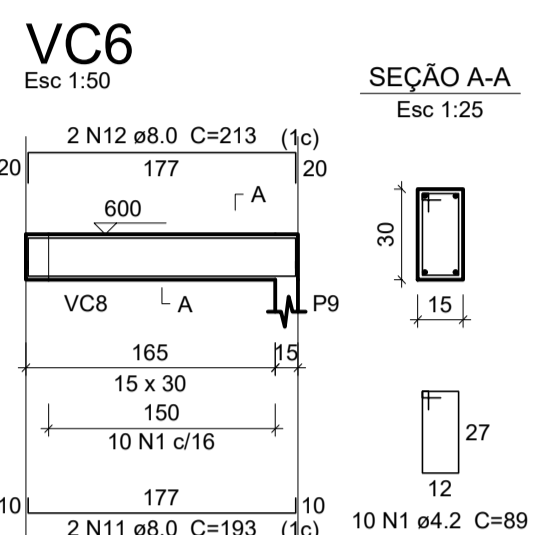
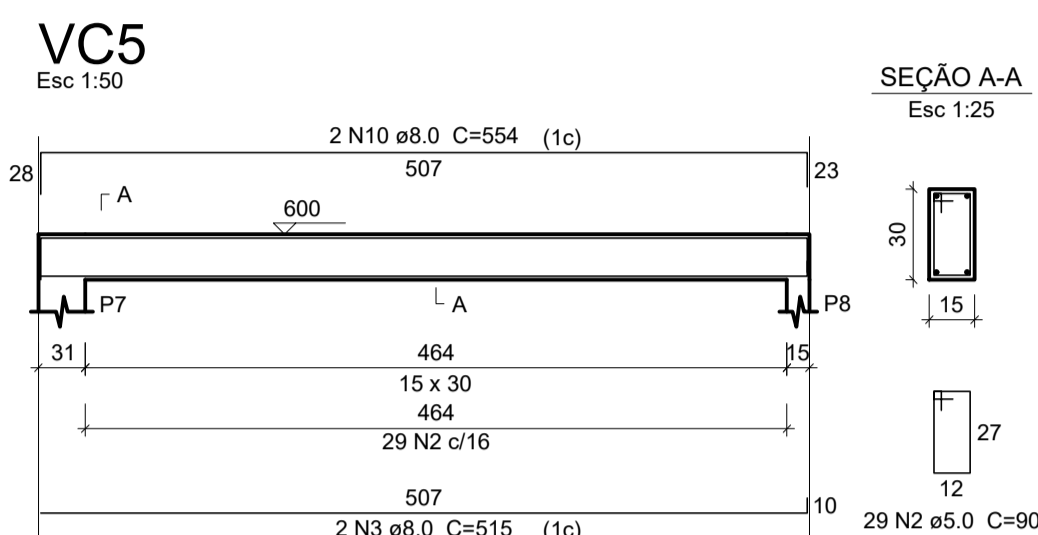
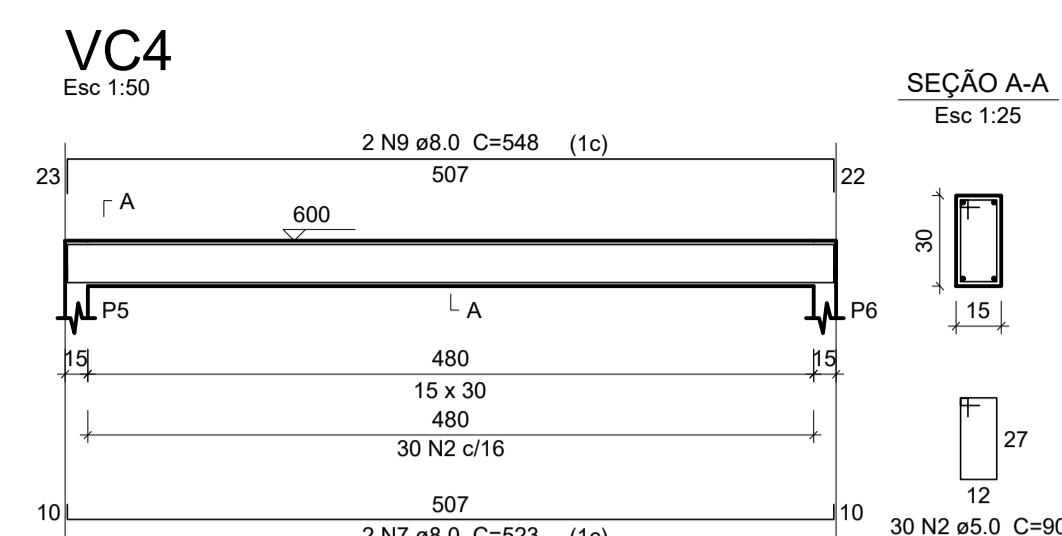
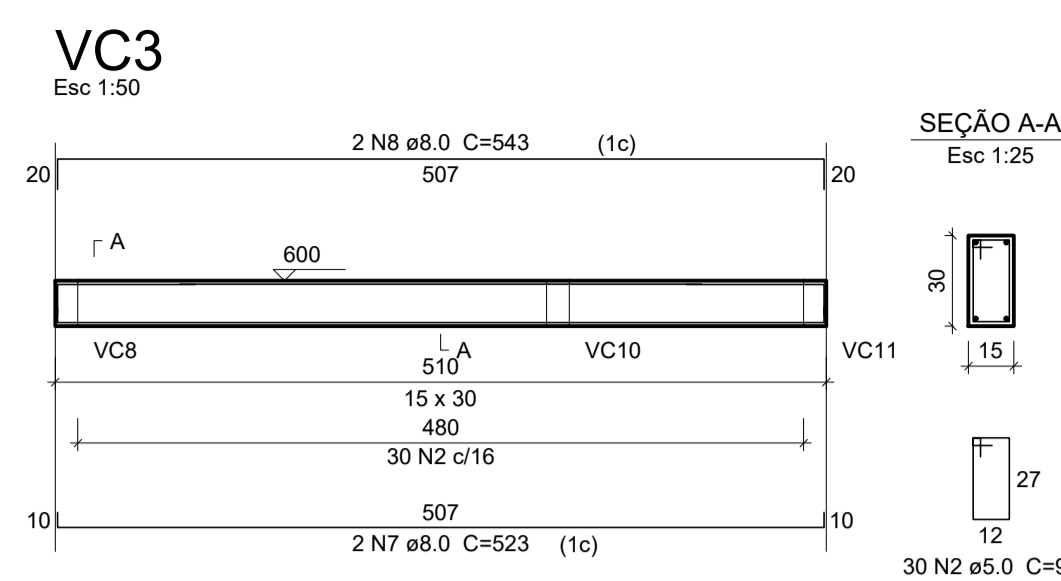
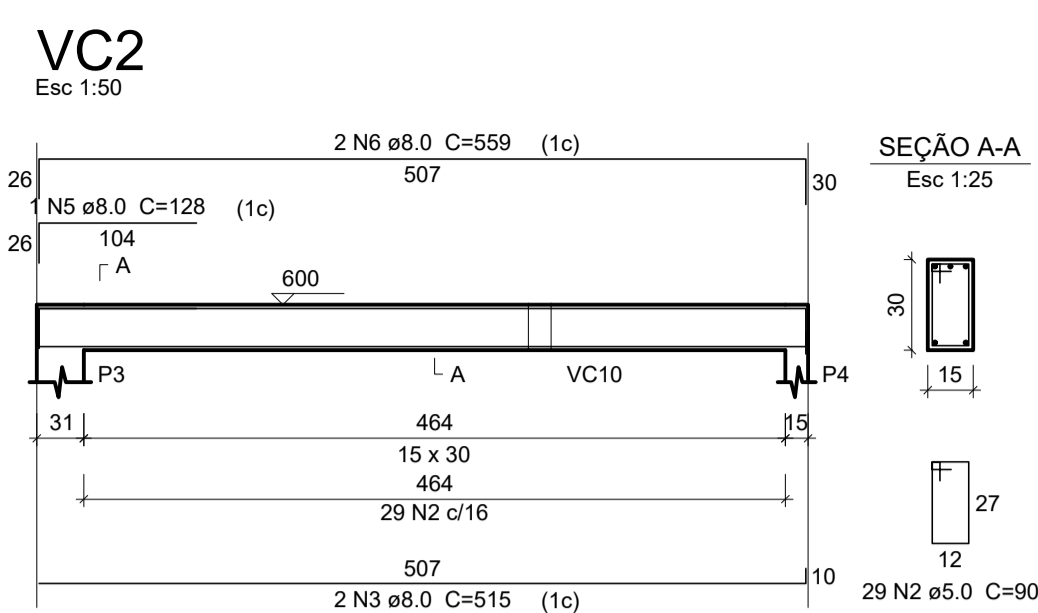
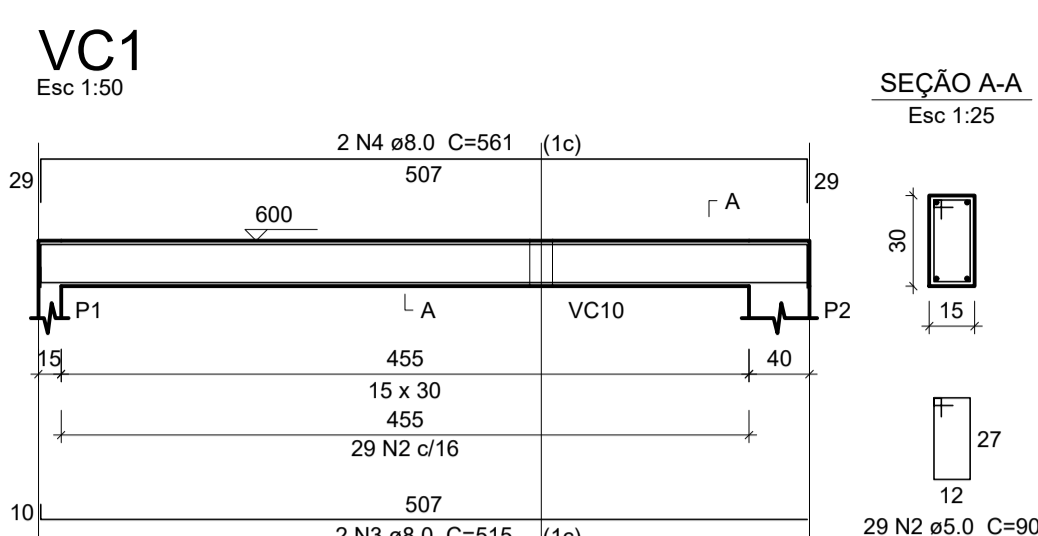
M&S ENGENHARIA E CONSTRUTORA  
CNPJ: 48.691.405/0001-40

ENG<sup>o</sup> CIVIL DANIEL SIMIONATO RICARDO ZAMPIERON MARIN  
CREA-PR 74528/D CREA-PR 178374/D

APROVAÇÃO

FOLHA

07.07



Relação do aço

AÇO	N	DIAM (mm)	QUANT	C.UNIT (cm)	C.TOTAL (cm)
CA60	1	4.2	69	89	6141
	2	5.0	300	90	27000
CA50	3	8.0	6	515	3090
	4	8.0	2	561	1122
	5	8.0	1	128	128
	6	8.0	2	559	1118
	7	8.0	4	523	2092
	8	8.0	2	543	1086
	9	8.0	2	548	1096
	10	8.0	2	554	1108
	11	8.0	2	193	386
	12	8.0	2	213	426
	13	8.0	2	507	1014
	14	8.0	1	125	125
	15	8.0	2	553	1106
16	8.0	2	1142	2284	
17	8.0	2	275	550	
18	8.0	4	1198	4792	
19	8.0	4	236	944	
20	8.0	2	227	454	
21	8.0	2	263	526	
22	8.0	2	335	670	
23	8.0	2	370	740	
24	8.0	2	1134	2268	
25	8.0	2	292	584	

Resumo do aço

AÇO	DIAM (mm)	C.TOTAL (m)	PESO + 10 % (kg)
CA50	8.0	277.1	120.3
CA60	4.2	61.5	7.3
	5.0	270	45.8
PESO TOTAL (kg)			
CA50		120.3	
CA60		53.1	

Volume de concreto (C-25) = 2.93 m<sup>3</sup>  
Área de forma = 48.9 m<sup>2</sup>