



PROJETO
001
ESTRUTURAL
BARRACÃO PRÉ-MOLDADO

ENDEREÇO
RUA EDUARDO DRABECKI

ÁREA DO TERRENO
465,72 m²

ÁREA TOTAL DA CONSTRUÇÃO
463,43 m²

PROPRIETÁRIO(S)

PREFEITURA MUNICIPAL DE RIO BONITO DO IGUAÇU
CNPJ: 95.587.770/0001-99

RESPONSÁVEL TÉCNICO

M&S ENGENHARIA E CONSTRUTORA
CNPJ: 48.691.405/0001-40

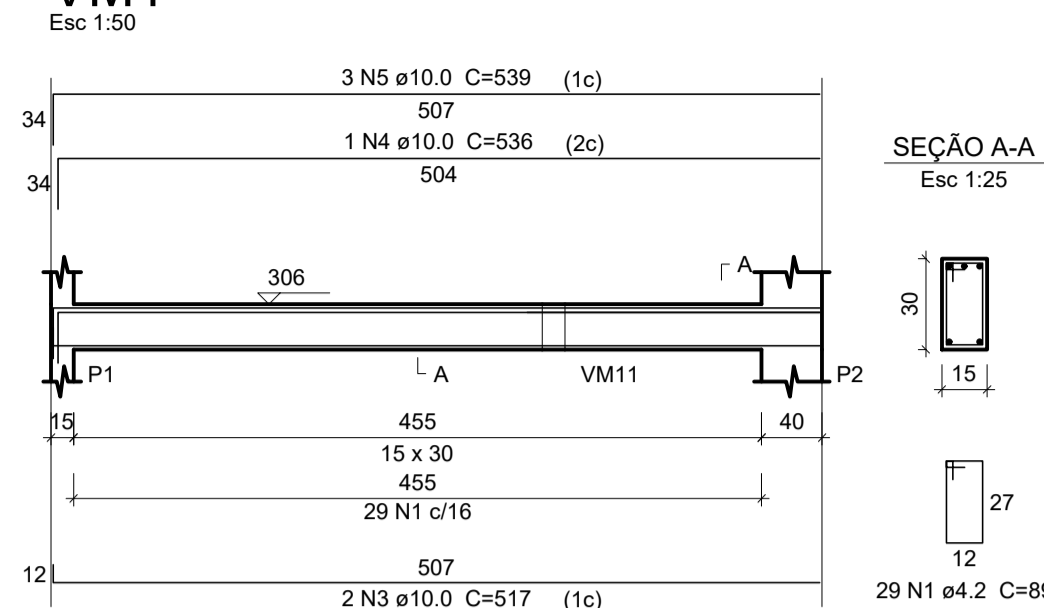
ENG^o CIVIL DANIEL SIMIONATO CREA-PR 74528/D RICARDO ZAMPIERON MARIN CREA-PR 178374/D

APROVAÇÃO

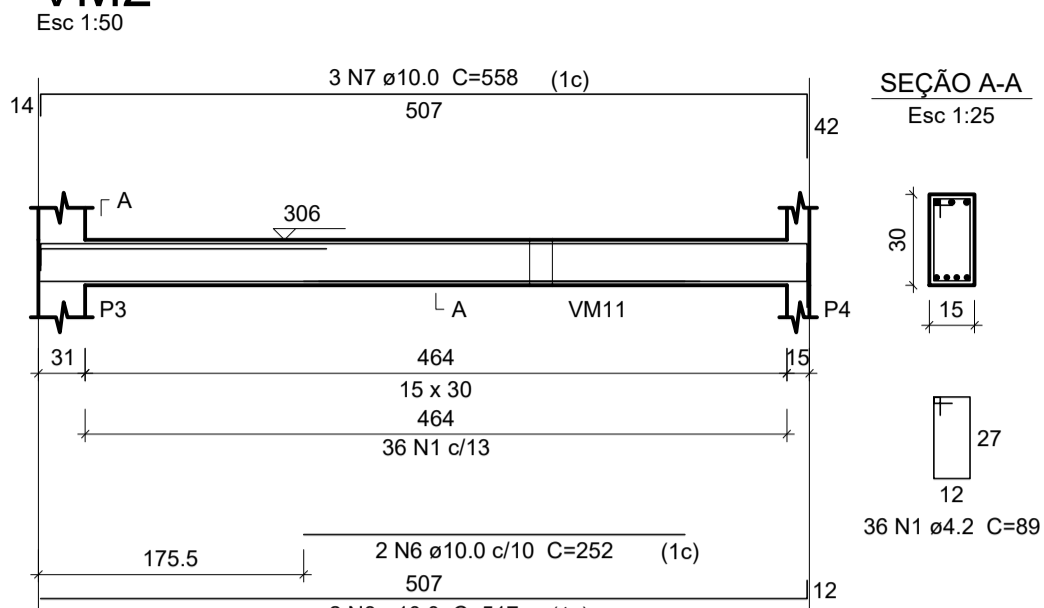
FOLHA

06.07

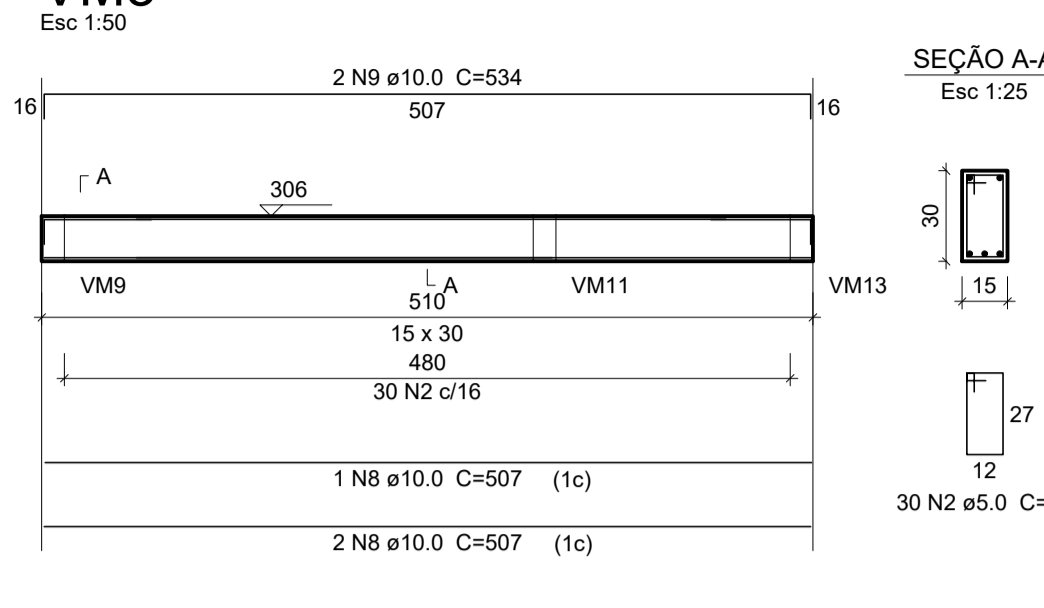
VM1



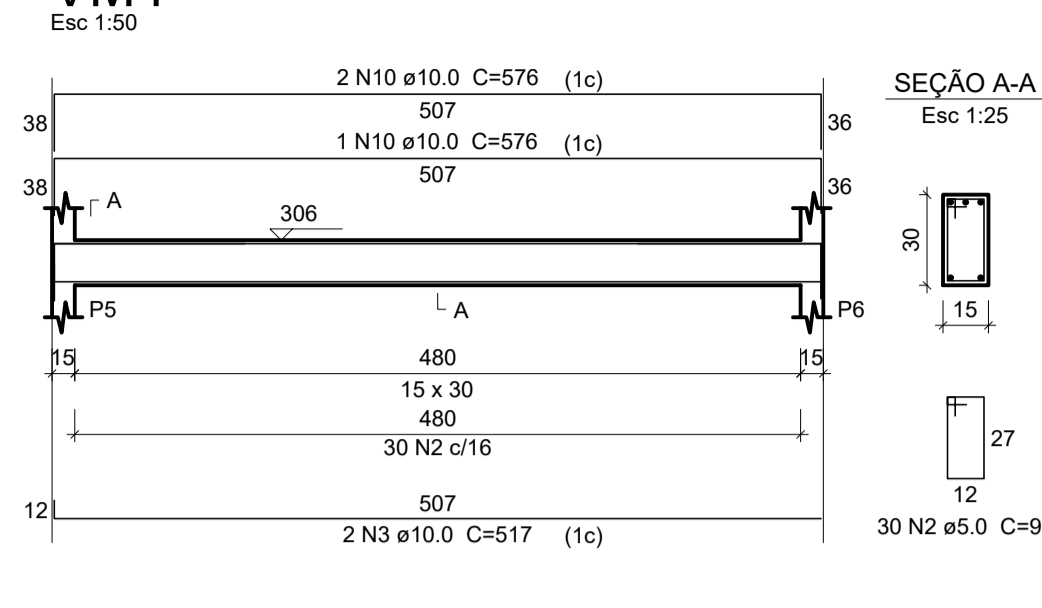
VM2



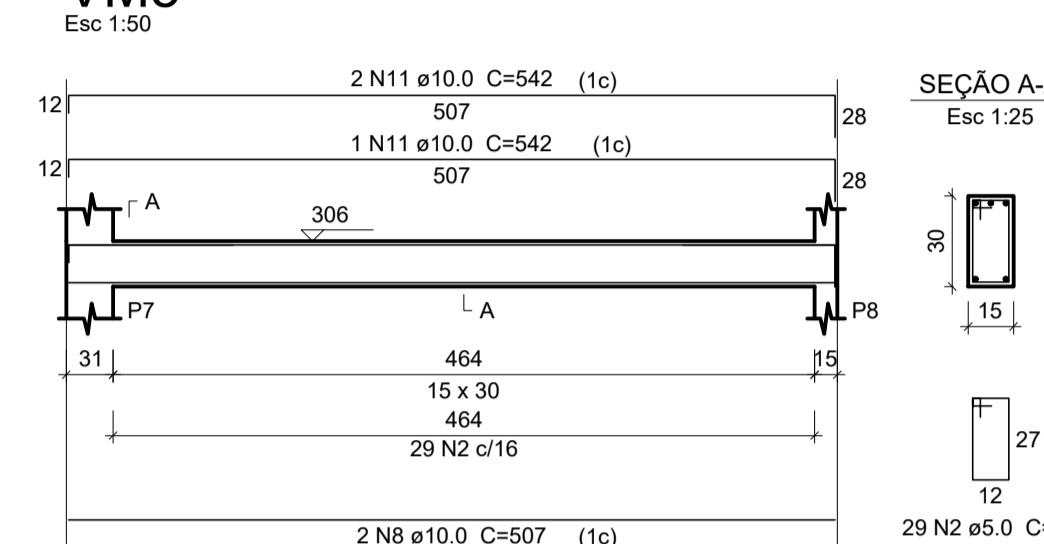
VM3



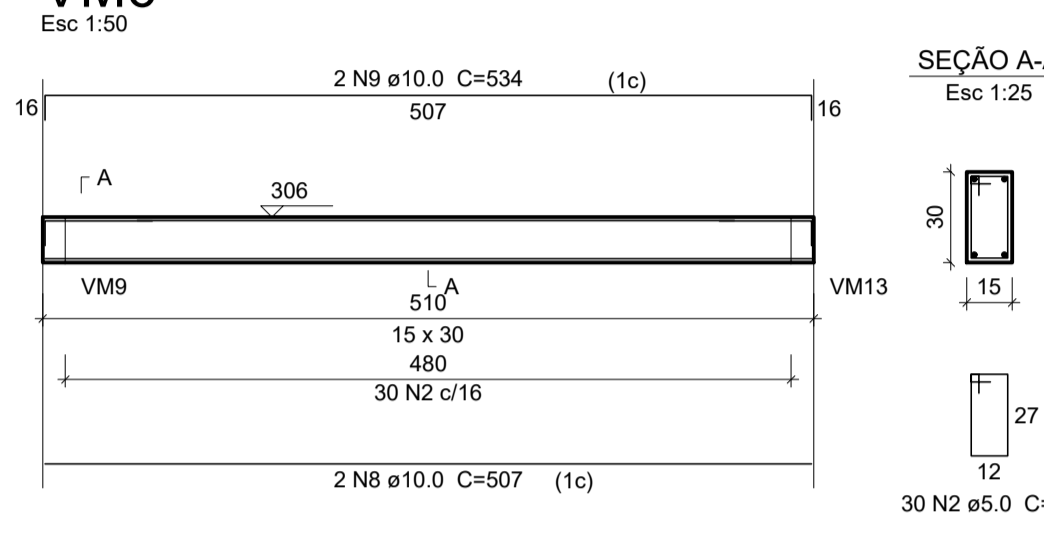
VM4



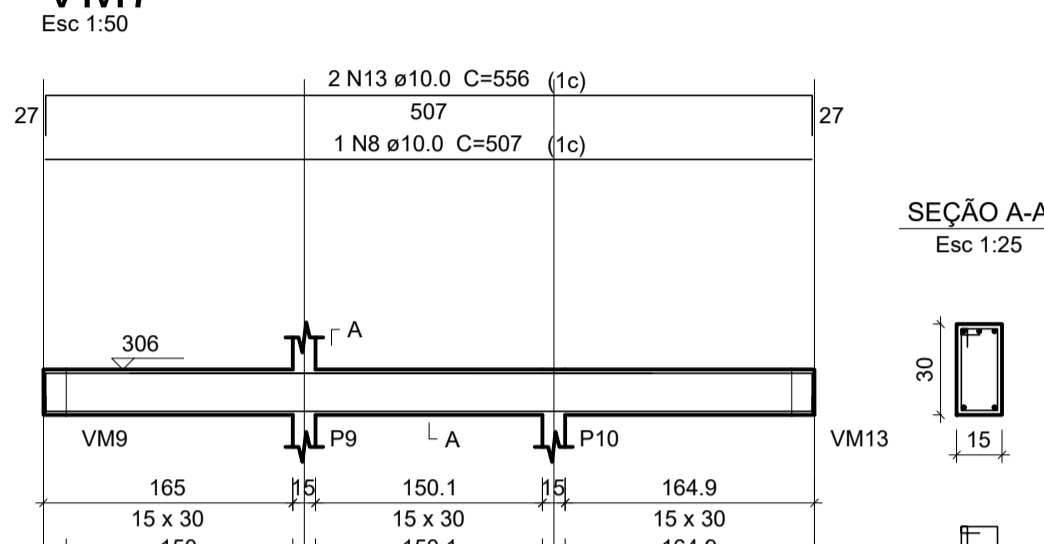
VM5



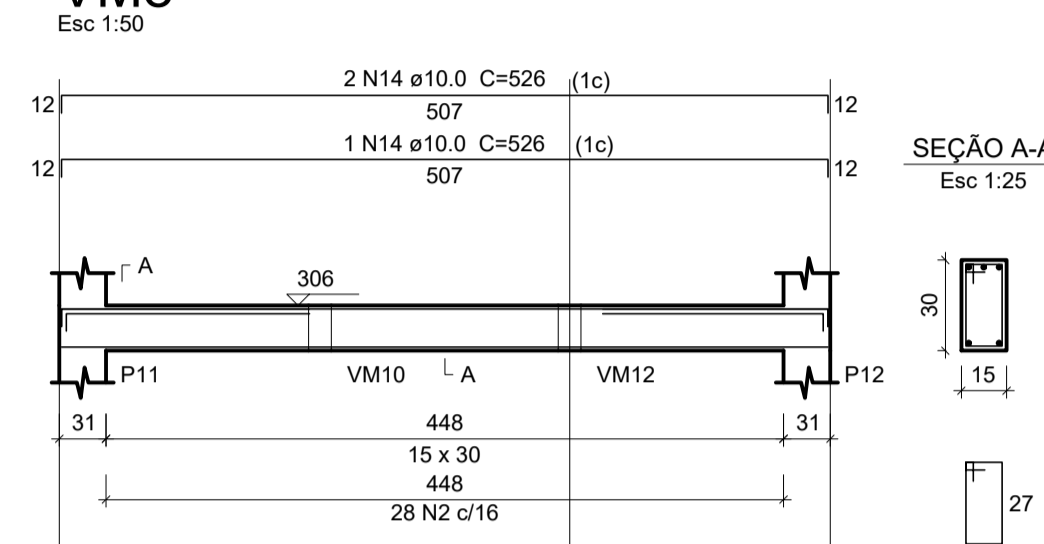
VM6



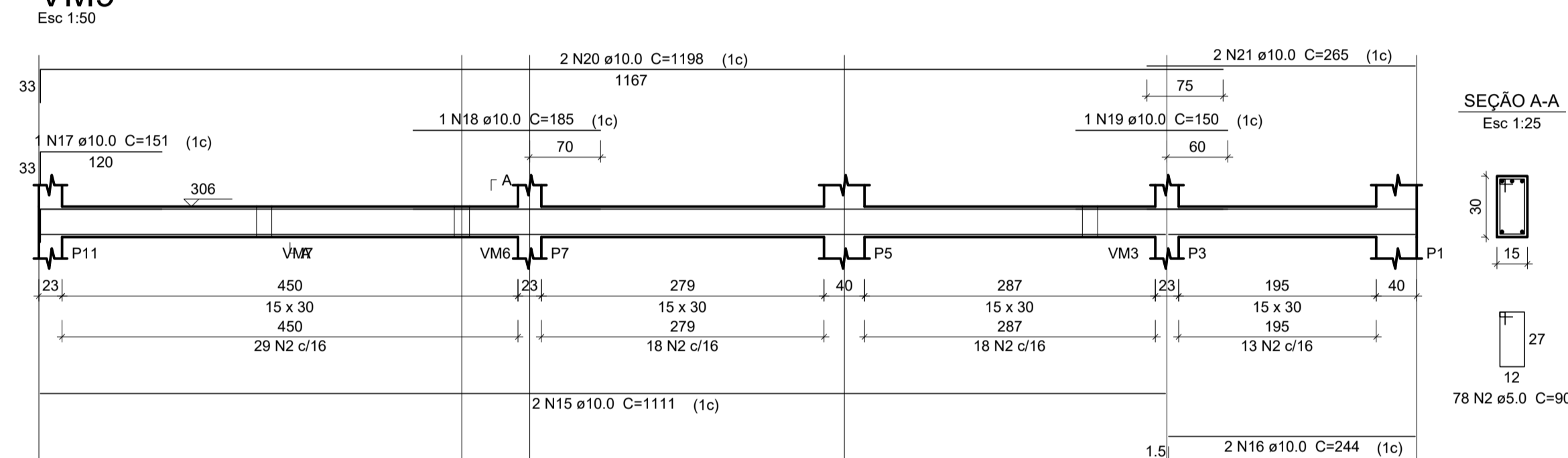
VM7



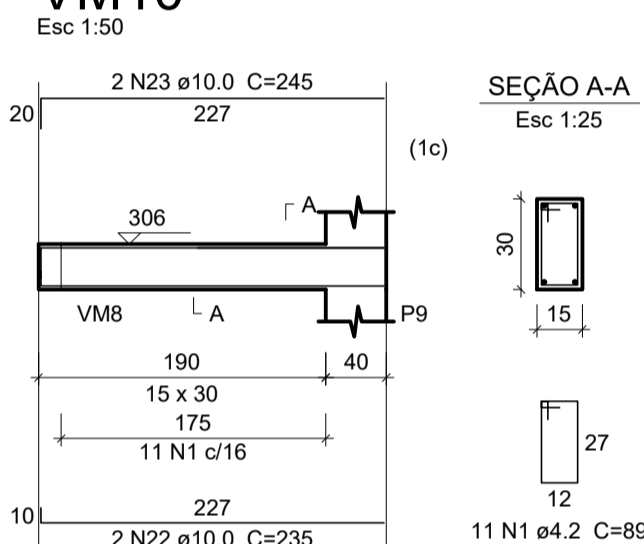
VM8



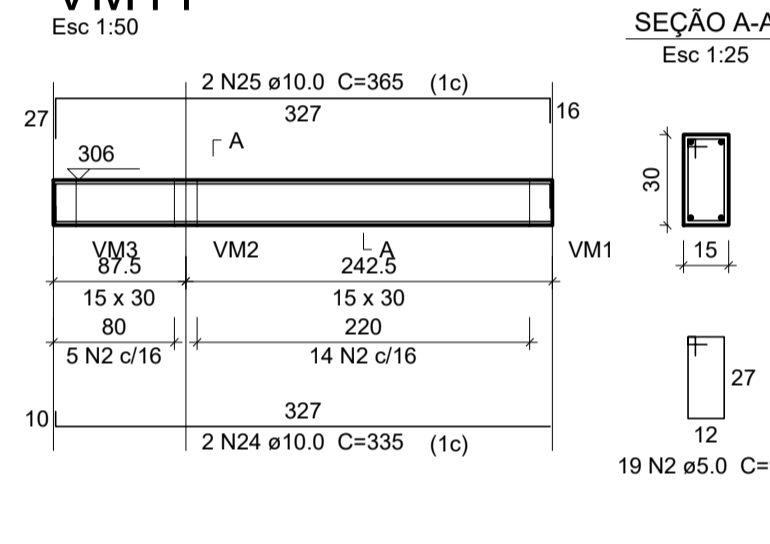
VM9



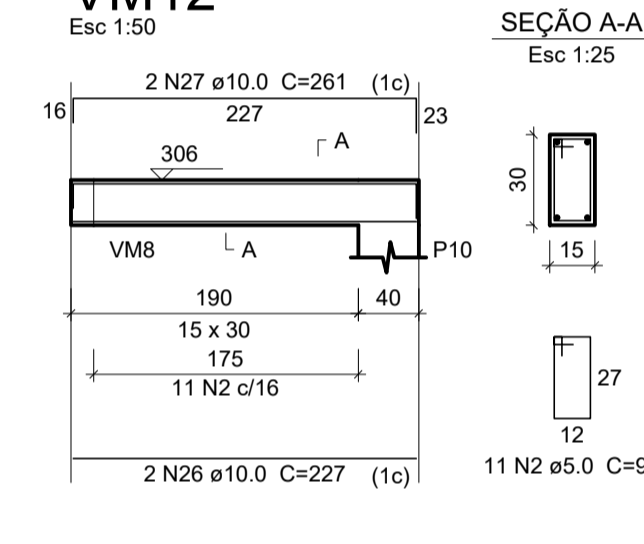
VM10



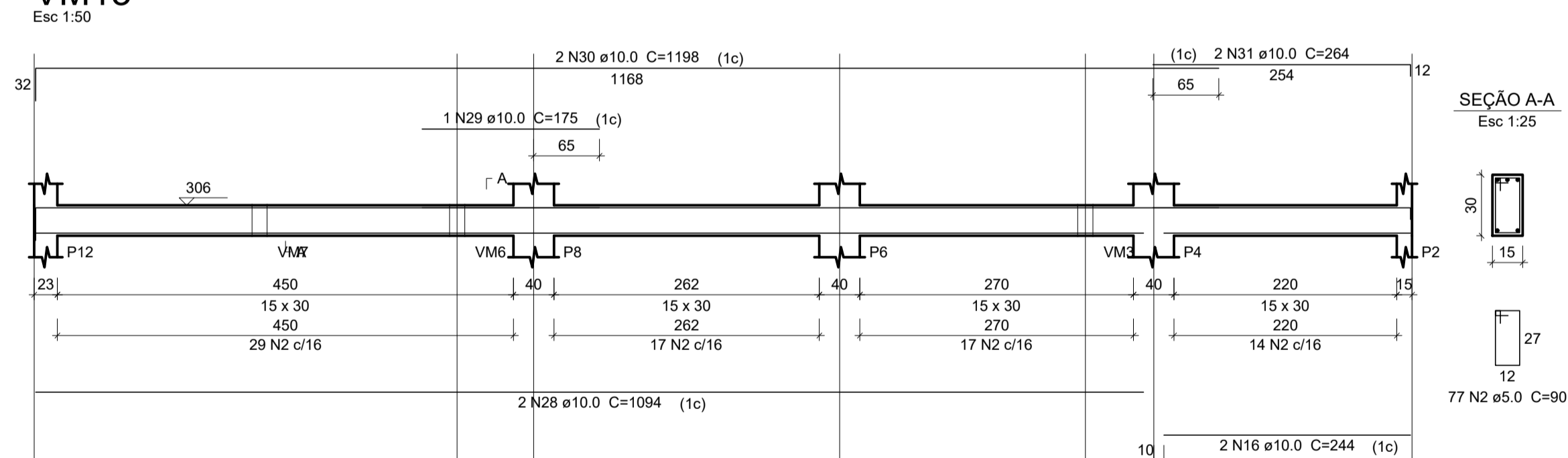
VM11



VM12



VM13



Relação do aço

VM1	VM2	VM3
VM1	VM5	VM6
VM4	VM7	VM9
VM7	VM8	VM11
VM10	VM11	VM12
VM13		

AÇO	N	DIAM (mm)	QUANT	C.UNIT (cm)	C.TOTAL (cm)
CA60	1	4.2	107	89	9523
	2	5.0	332	90	29880
CA50	3	10.0	6	517	3102
	4	10.0	1	536	536
	5	10.0	3	539	1617
	6	10.0	2	252	504
	7	10.0	3	558	1674
	8	10.0	10	507	5070
	9	10.0	4	534	2136
	10	10.0	3	576	1728
	11	10.0	3	542	1626
	12	10.0	2	522	1044
	13	10.0	2	556	1112
	14	10.0	3	526	1578
	15	10.0	2	1111	2222
	16	10.0	4	244	976
	17	10.0	1	151	151
	18	10.0	1	185	185
	19	10.0	1	150	150
	20	10.0	2	1198	2396
	21	10.0	2	265	530
	22	10.0	2	235	470
	23	10.0	2	245	490
	24	10.0	2	335	670
	25	10.0	2	365	730
	26	10.0	2	227	454
	27	10.0	2	261	522
	28	10.0	2	1094	2188
	29	10.0	1	175	175
	30	10.0	2	1198	2396
	31	10.0	2	264	528

Resumo do aço

AÇO	DIAM (mm)	C.TOTAL (m)	PESO + 10 % (kg)
CA50	10.0	369.6	250.7
CA60	4.2	95.3	11.4
	5.0	298.8	50.7
PESO TOTAL (kg)			
CA50		250.7	
CA60		62.1	

Volume de concreto (C-25) = 3.42 m³
Área de forma = 56.93 m²