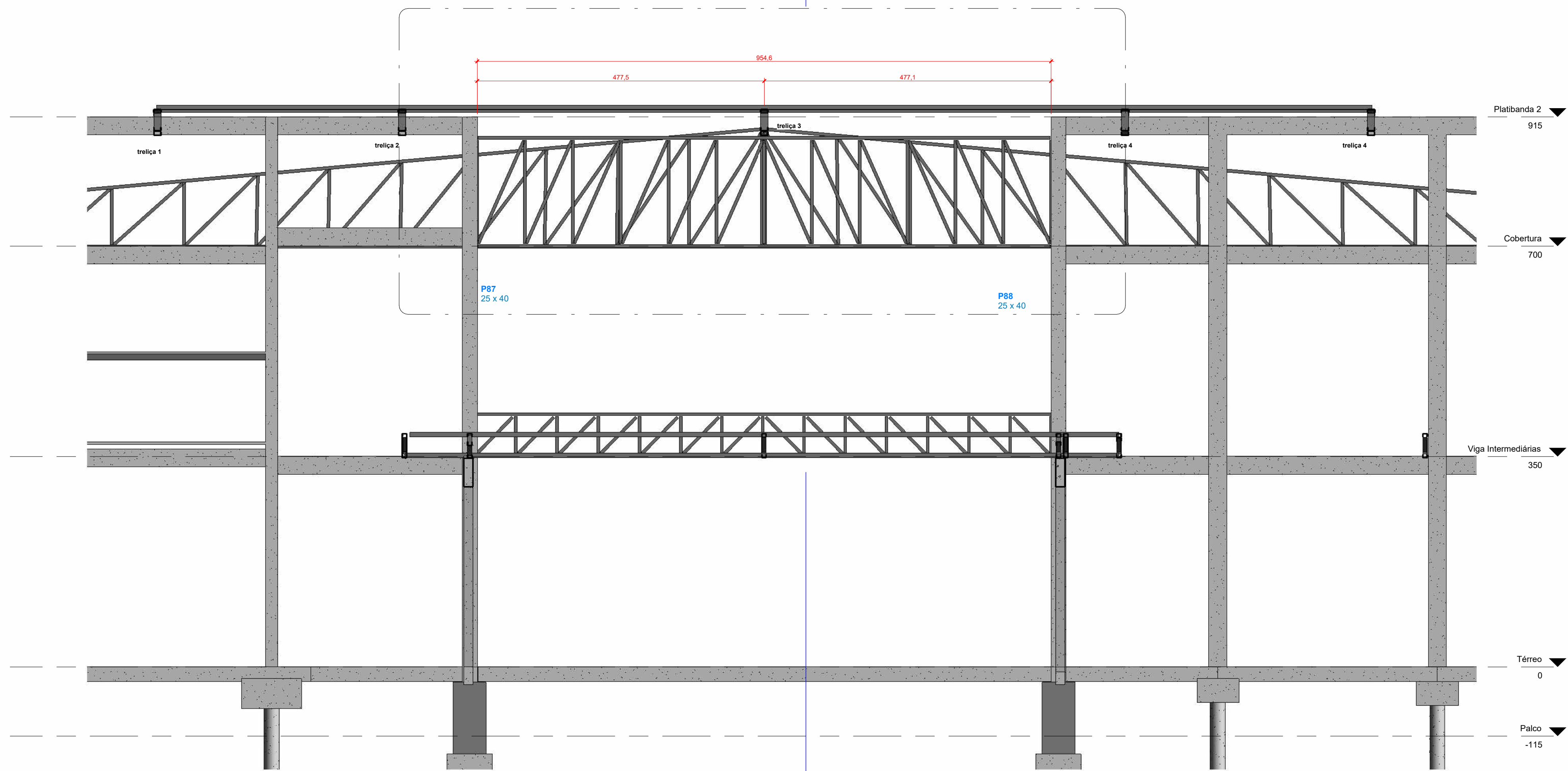
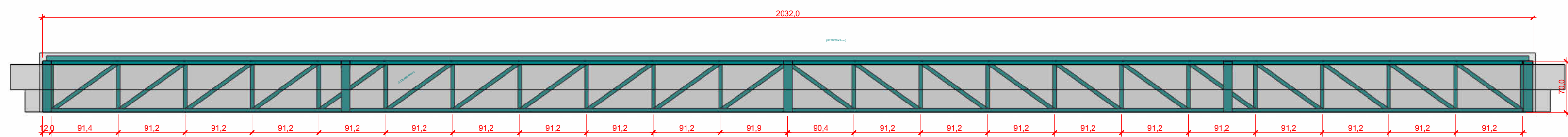


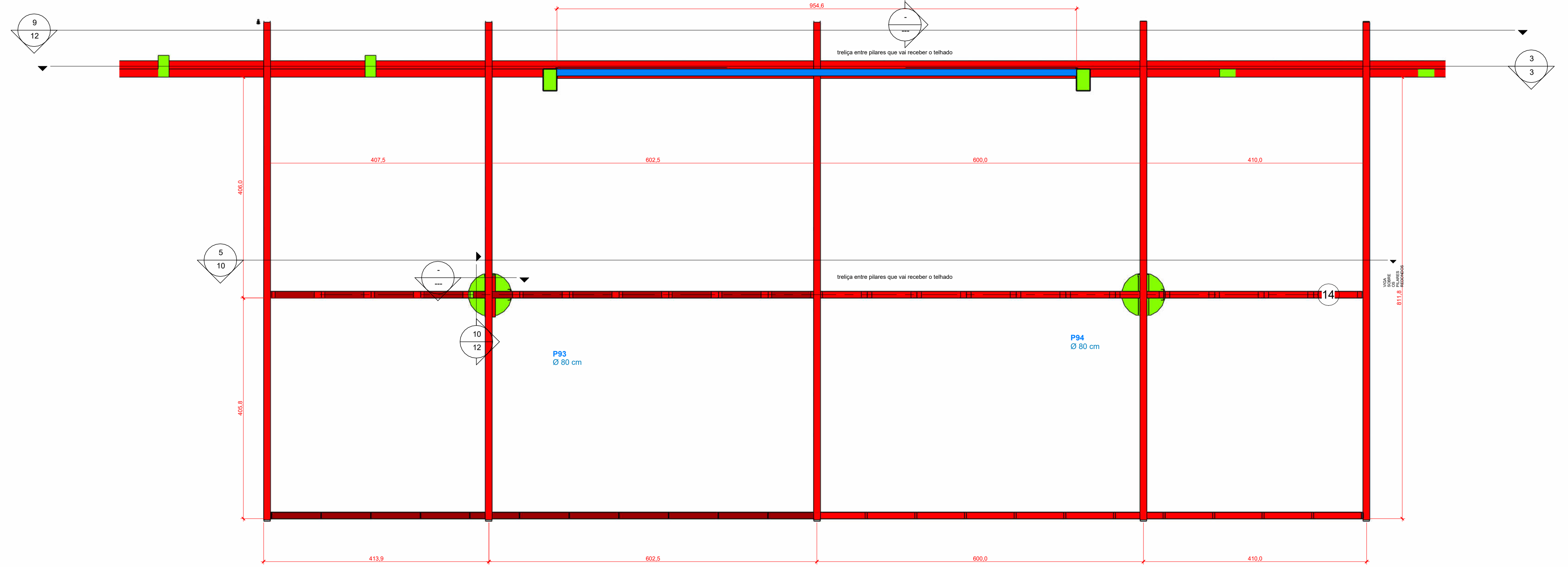
TRELÇA 154x180cm
1:25



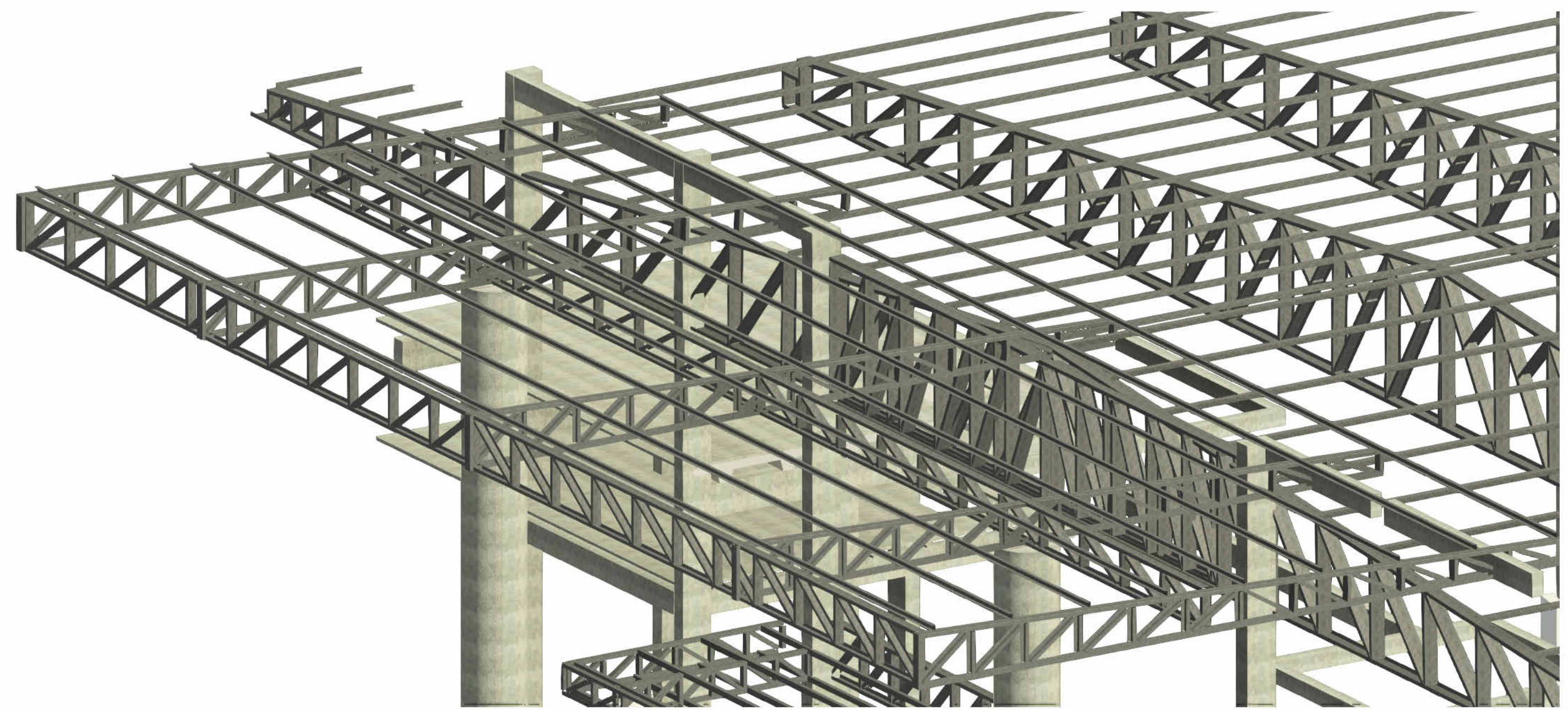
Corte PORTA FRONTAL
1:50



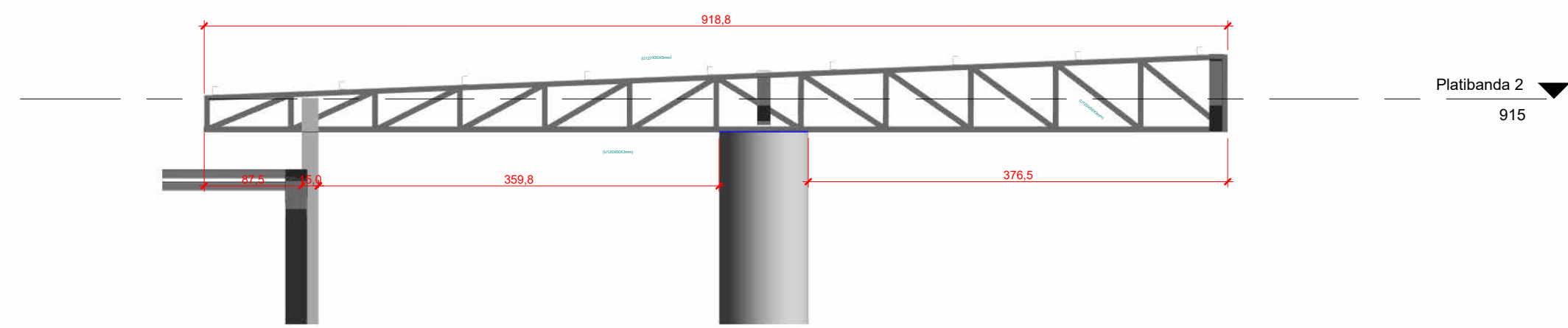
Triliza Meslko - PLATIBANDA FRONTAL
1:50



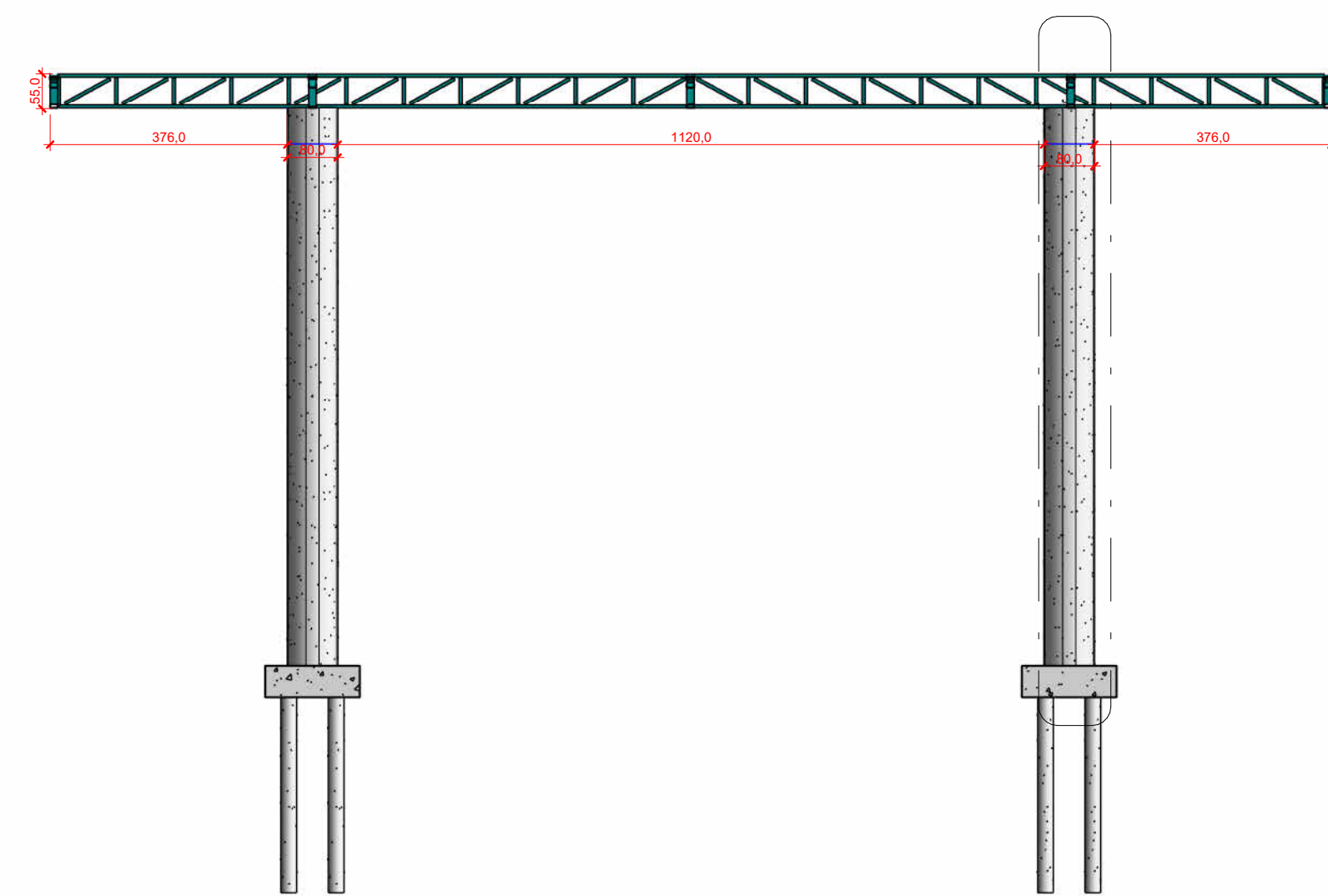
Platibanda 2 Cuslar 1
1:50



3D - COBERTURA FRONTAL



Triliza Telhado
1:50



VIGA SOBRE OS PILARES REDONDOS
1:100

DATA	REVISÃO	DESCRIÇÃO
OBRA: CENTRO CULTURAL		
PRANCHAS: 010	ESCALA: Como indicada	
CONTEÚDO:		
PROPRIETÁRIO: PREF. MUN. RIO BONITO DO IGUAÇU		
ENGENHEIRO: RBL-PR		
RESPONSÁVEL TÉCNICO: DEMARI FRANCELINI LEONARDO - CAU: A117489-4		
CARIMBO E ASSINATURA:		
FOLHA:		F10